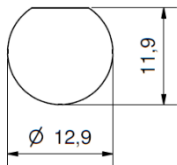
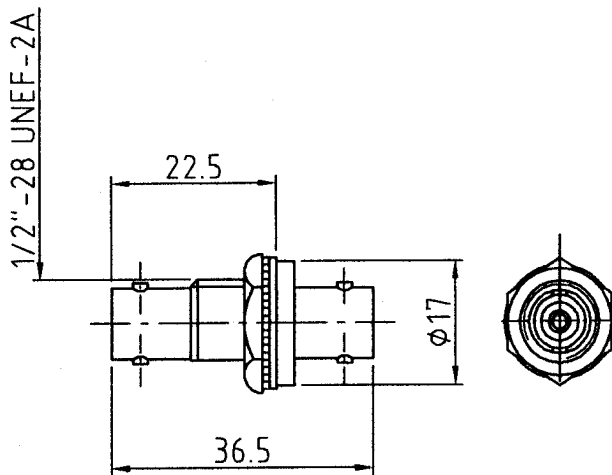














# Bulkhead Adaptor - insulated

BNC 75 Ohm



Mounting hole  
 Mounting panel  $\leq 6$  mm  
 without serrated washer  $\leq 7$  mm

## Insulated assembly Insulating flange of Polycarbonate (PC)

Part Number	Insulating flange colour*		
1-6674-2153	yellow		RAL 1003
1-6675-2153	orange		RAL 2010
1-6676-2153	red		RAL 3001
1-6677-2153	violet		RAL 4008
1-6678-2153	blue		RAL 5005
1-6679-2153	green		RAL 6032
1-6680-2153	grey		RAL 7004
1-6681-2153	brown		RAL 8002
1-6682-2153	white		RAL 9003
1-6683-2153	black		RAL 9004
1-6167-2153	lightgrey		RAL 7035
1-8119-2153	turquoise (cyan)		RAL 5018

\* Colour differences are not excluded, due to different manufacturing processes and pigmentation. Colour Illustration only used for orientation.

