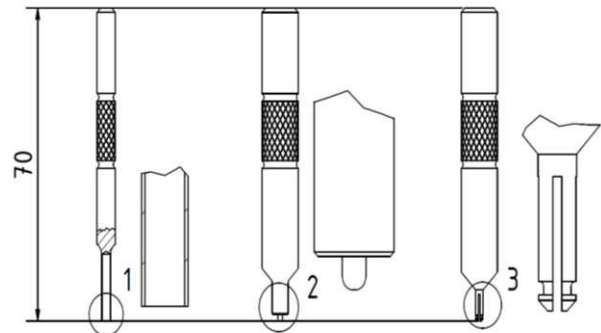
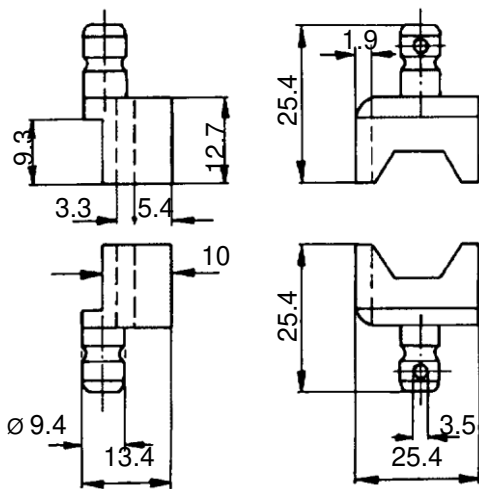


Crimp Die/ Assembly tool

ARD Triax



Crimping Dies Part-No. 90-xxxx-1100-14 incl. assembly-kit, consists of:

- 1 Release mandrel to release the contact pins and -sockets
- 2 Press-in mandrel to press-in the guide bush
- 3 Pull-out mandrel to pull out the guide bush

Accessories: 2 clamping sleeves
Expanding-mandrel (extra order)

Application with crimping plier Part-No. 90-1022-1000 (size 0)

Cable Group	Connection	Part Number
A and B	Inner conductor Inner shield Outer shield with cable clamp Outer shield without cable clamp	90-1017-1100-14 (incl. assembly-kit 90-1241-2217) 90-1017-1100-14 (incl. assembly-kit 90-1241-2217) 90-1031-1100 soldered connection
D and E	Inner conductor Inner shield Outer shield with cable clamp Outer shield without cable clamp	90-1038-1100-14 (incl. assembly-kit 90-1241-2217) 90-1038-1100 90-1051-1100 soldered connection

Cable Group	Connection	Part Number
F	Inner conductor Inner shield Outer shield with cable clamp Outer shield without cable clamp	90-1053-1100-14 (incl. assembly-kit 90-1241-2217) 90-1051-1100 90-1052-1100 soldered connection
I	Inner conductor Inner shield Outer shield with cable clamp Outer shield without cable clamp	90-1017-1100-14 (incl. assembly-kit 90-1241-2217) 90-1017-1100-14 (incl. assembly-kit 90-1241-2217) 90-1017-1100 soldered connection
N	Inner conductor Inner shield Outer shield with cable clamp Outer shield without cable clamp	90-1030-1100-14 (incl. assembly-kit 90-1241-2217) 90-1030-1100-14 (incl. assembly-kit 90-1241-2217) 90-1051-1100 soldered connection