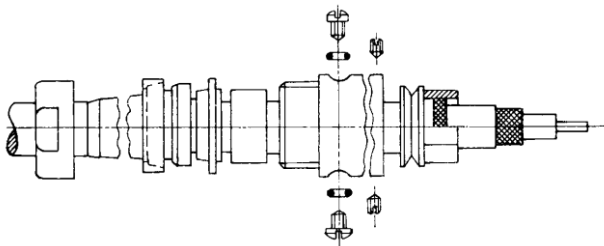
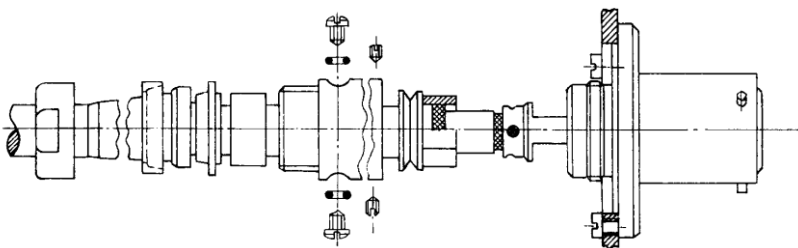


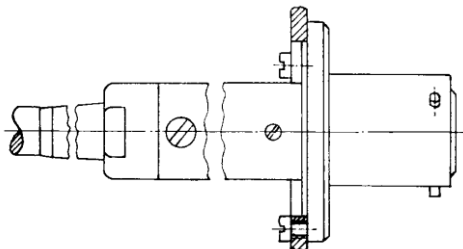
Strip the insulation from the cable as specified in the table.



Slide the cable clamp and fittings over the cable. Place the outer braiding around the tension relief ring, slide over the large clamping sleeve, and solder or crimp using the crimping pliers. (For soldering, no clamping sleeve is required.)



Fix the panel cable plug onto the mounting panel.



Insert the cable in the plug-in connection. Then solder the inner conductor and the inner shield. Slide forward the outer sleeve, screw tight and fasten using two threaded pins. Use two cheese-head screws to attach the tension relief ring. Finally screw the pressure nut with gasket and Strain Relief Sleeve (if available) on the outer sleeve.

) 1 The release mandrel that has been inserted from the connector side can be used to remove changed contact pins and sockets again after they have been snapped in. If a contact pin or a contact socket has been removed, **check that the spring ring has a diameter of 2.4 before reinserting!** (Expand the spring ring if necessary.)

Assembly Instruction	a	b	c	d	e
109	-	-	17.0	8.0	4.0
110	40.0	17.0	17.0	8.0	4.0