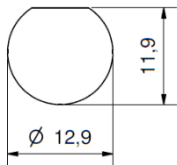
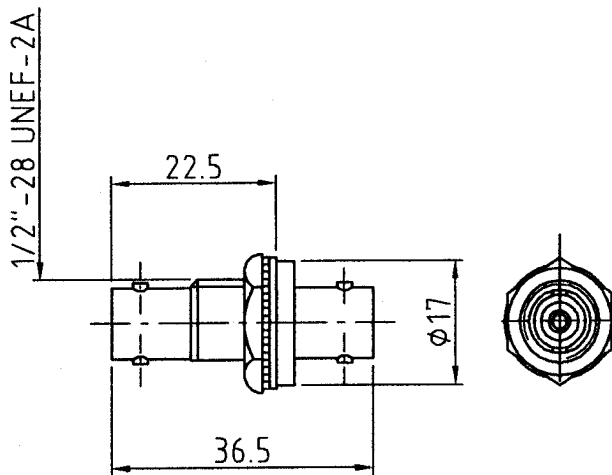














# Bulkhead Adaptor - insulated

BNC 75 Ohm



Mounting hole  
 Mounting panel  $\leq 6$  mm  
 without serrated washer  $\leq 7$  mm

## Insulated assembly Insulating flange of Polycarbonate (PC)

Part Number	Insulating flange colour*	
1-6674-2153	yellow	 RAL 1003
1-6675-2153	orange	 RAL 2010
1-6676-2153	red	 RAL 3001
1-6677-2153	violet	 RAL 4008
1-6678-2153	blue	 RAL 5005
1-6679-2153	green	 RAL 6032
1-6680-2153	grey	 RAL 7004
1-6681-2153	brown	 RAL 8002
1-6682-2153	white	 RAL 9003
1-6683-2153	black	 RAL 9004
1-6167-2153	lightgrey	 RAL 7035
1-8119-2153	turquoise (cyan)	 RAL 5018

\* Colour differences are not excluded, due to different manufacturing processes and pigmentation. Colour Illustration only used for orientation.

