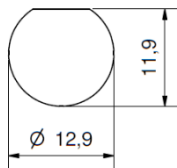
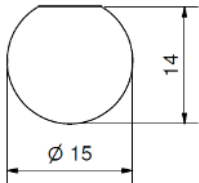


with additional clamping of  
the cable sheath on request



Mounting hole without Insulation Washer

Mounting panel  $\leq 5$  mm  
without serrated washer  $\leq 6$  mm



Mounting hole with Insulation Washer

Mounting panel  $\leq 3$  mm  
without serrated washer  $\leq 4$  mm

**Inner conductor - Solder connection**

**Outer conductor - Clamp connection**

Accessories (extra order): Insulation Washer Part-No. 2-1887-9200 (black) and other colours

# Panel Cable Socket

BNC 75 Ohm 2/2

Cable-nominal -Ø	Cable Group*	Reference Cable*	Part Number	Assembly Instruction
3	1, 2	RG-174; RG-179B	1-1240-2142	10
4	3, 4	RG-122; RG-195	1-1241-2142	
5	5, 64	---	1-1242-2142	5
	19, 42	0.6/2.8AF <i>Draka</i>	1-1435-2142	
6	8	RG-62	1-1243-2142	13
	23	0.6/3.7 <i>Draka</i>	1-1256-2142	5
	50	0.8/3.7AF <i>Draka</i>	1-1436-2142	
7	11, 51	0.8/4.9D; 1.0/4.8AF <i>Draka</i>	1-1244-2142	6
9	12, 13	1.0/6.6; RG-6A	1-1245-2142	
	52	1.4/6.6AF <i>Draka</i>	1-4071-2142	
11	28	RG-11A	1-2252-2142	6
	29	RG-13A	1-2253-2142	

\* see Cable Table Coaxial Cable

