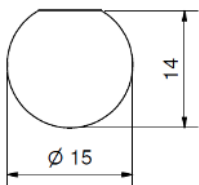


Mounting hole without Insulation Washer

Mounting panel  $\leq 4$  mm  
without serrated washer  $\leq 5$  mm



Mounting hole with Insulation Washer

Mounting panel  $\leq 2$  mm  
without serrated washer  $\leq 3$  mm

## Crimp connection

Accessories (extra order): Insulation Washer Part-No. 2-1887-9200 (black) and other colours

# Panel Cable Socket - angled

BNC 75 Ohm 2/2

Cable-nominal -Ø	Cable Group*	Reference Cable*	Part Number	Assembly Instruction
3	1	RG-174	1-3336-2143	7
	2	RG-179B	1-3335-2143	
4	3	RG-122	1-3334-2143	
	4	RG-195	1-3333-2143	
5	19	---	1-3331-2143	
6	8	RG-62	1-3329-2143	15
	23	0.6/3.7 <i>Draka</i>	1-3330-2143	7
7	11	0.8/4.9D	1-3328-2143	
8	12	RG-6A	1-3327-2143	
9	13	1.0/6.6	1-3326-2143	
11	28	RG-11A	1-3338-2143	
	29	RG-13A	1-3337-2143	

\* see *Cable Table Coaxial Cable*

