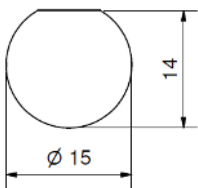


Mounting hole without Insulation Washer

	a = 32.5	a = 36.5
Mounting Panel	$\leq 5 \text{ mm}$	$\leq 9 \text{ mm}$
without Serrated Washer	$\leq 6 \text{ mm}$	$\leq 10 \text{ mm}$



Mounting hole with Insulation Washer

	a = 32.5	a = 36.5
Mounting Panel	$\leq 3 \text{ mm}$	$\leq 7 \text{ mm}$
without Serrated Washer	$\leq 4 \text{ mm}$	$\leq 8 \text{ mm}$

Accessories (extra order): Insulation Washer Part-No. 2-1887-9200 (black) and other Colors

Part Number	Dimension		Description
	a	b	
1-8516-13153	32.5	20.0	Mounting with Hexagon Nut
1-8517-13153	36.5	24.0	