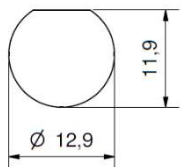
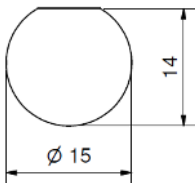


preferably for Patch Panels



Mounting hole without Insulation Washer

	a = 32.5	a = 36.5
Mounting Panel	≤ 5 mm	≤ 9 mm
without Serrated Washer	≤ 6 mm	≤ 10 mm



Mounting hole with Insulation Washer

	a = 32.5	a = 36.5
Mounting Panel	≤ 3 mm	≤ 7 mm
without Serrated Washer	≤ 4 mm	≤ 8 mm

Accessories (extra order): Insulation Washer Part-No. 2-1887-9200 (black) and other Colors

Socket Wrench Part-No. 90-1108-1808 for Slotted Nut

Part Number	Dimension		Description
	a	b	
1-8518-13153	32.5	20.0	Mounting with Slotted Nut
1-8519-13153	36.5	24.0	