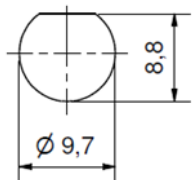
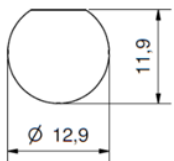


## Crimp Connection



Mounting hole  
without Insulation Washer  
Mounting panel  $\leq 6$  mm  
without Serrated Washer  $\leq 7$  mm



Mounting hole  
with Insulation Washer  
Mounting panel  $\leq 4$  mm  
without Serrated Washer  $\leq 5$  mm

Accessories (extra order): Insulation Washer Part-No. 2-1855-9200 (black) and other colours  
Strain Relief Sleeve

Other variations: See Page „Design Options“.

| Cable-Ø | Cable-Group* | Reference Cable*                               | HEX**   | Part Number  | Assembly Instruction |
|---------|--------------|--|---------|--------------|----------------------|
| 3       | 2            | RG-179   | 1.2/3.3 | 1-8548-13142 | 100                  |
|         | 79           | RG-179DT Belden                                |         | 1-8781-13142 |                      |
|         | 100          | VDU042LP Klotz                                 |         | 1-8549-13142 |                      |
| 5       | 42           | 0.6/2.8AF Draka;<br>1855 ENH Belden            | 1.2/5.4 | 1-8550-13142 |                      |
| 6       | 23           | RG-59; 0.6/3.7 Draka                           | 1.2/6.5 | 1-8551-13142 |                      |
| 7       | 51           | 1.0/4.8AF Draka; 1694A Belden;<br>4694R Belden | 1.7/7.6 | 1-8551-13142 |                      |

\* see Cable Table Coaxial Cable

\*\* Hex dimension for Crimp Die

BNCpro made by Damar & Hagen is intermateable with all common BNC-Series.

The specified data serve only to describe the product and should not be considered legally binding, guaranteed properties.  
We reserve the right to make constructional changes, determine delivery and are not responsible for any errors and omissions.